

SCX SERIES Commercial Lighting

SCX-2X4-60W-MCT4-D-DIP
ARCHITECTURAL DROP IN T-BAR LIGHTS

MCT4 Multi Color Temperature (Selectable)

WESTGATE
THE FUTURE IS HERE...AND IT'S QUITE BRIGHT!

Customer Name: _____

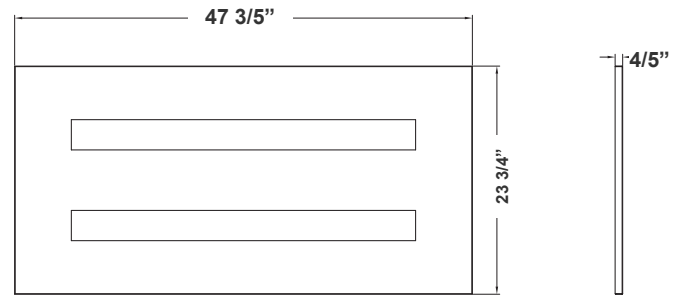
Project Name: _____

Note: _____

Type: _____



Custom:



47 3/5"(L) x 23 3/4"(W) x 4/5"(D)

The SCX series offers the best and the most comprehensive selection for linear lighting. The various available lengths and widths allow the creation of the desired shape to elevate the areas aesthetics to a unique and modern look while providing an impressive illumination for the occupants. Ideal for, retail locations, offices, lobbies, conference rooms, reception areas, hallways, educational facilities, hotels, and restaurants. FEATURES: Superior Architectural Look Energy-efficient: Low Wattage Consumption & High Lumen Output Easier Wire Management & Install Variety of Mounting Options Multi Color Temperature (Selectable Switch Inside Fixture) Variety Of Factory Customizations Available

Features

- LED Superior Architectural Lights
- 50,000 Hours Rated Life
- Lens Type: Opal Polycarbonate Lens

Technical Specifications

Electrical:

- Voltage: 120-277VAC 50/60Hz
- Wattage: 60W
- Power Factor: >0.95

Mechanical:

- Low Profile Modern Design
- Aluminum Housing With Matte White Finish
- Custom Colors Available
- Lens Snaps into Housing
- IP Rating: IP54
- Operating Temperature: -13°F~104°F

Lighting:

- MCT4: Multi Color Temperature (Selectable Switch Inside Fixture)
- Dimming: 0-10V Dimming
- Total Lumens: 6600LM
- Color Temperatures: 3000K/3500K/4000K /5000K
- Color Rendering Index: CRI ≥ 80
- Beam Angle: 104.8°(H) x 100.5°(V)

Applications:

- Ideal for offices, hotels, corridors, saloons, libraries, meeting rooms, conference halls, and the best solution for modern lighting solutions
- It can be used in any indoor applications

Other Models:

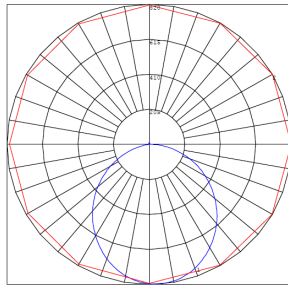
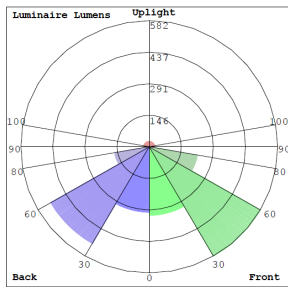
- 60W | 6600LM | SCX-2X4-20W-MCT4-D-DIP-LUV



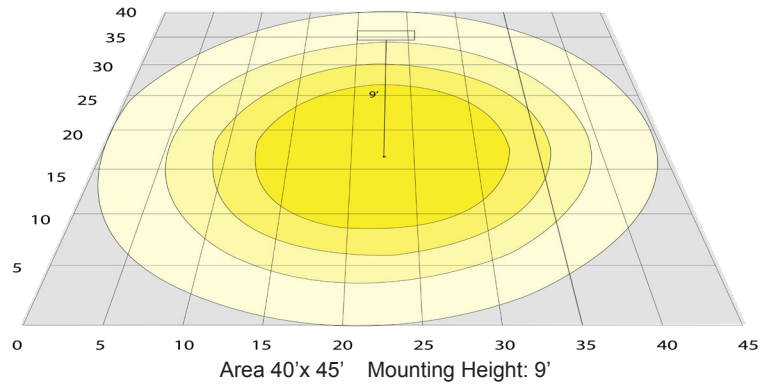
Phone: (877) 805-2252 | Fax: (877) 805-2252
www.westgatemfg.com



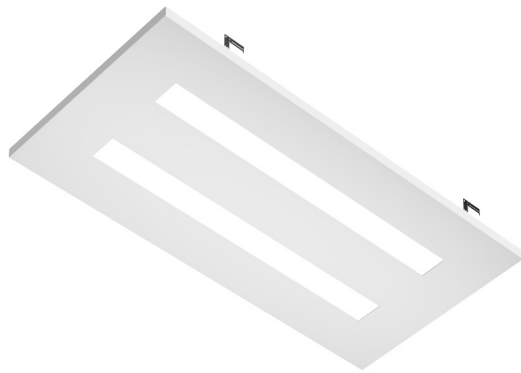
Photometrics: SCX-2X4-60W-MCT4-D-DIP



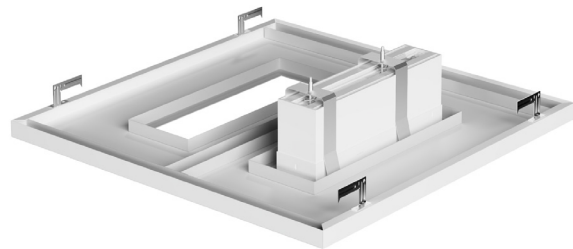
BUD Rating: B1-U2-G1



Other Views:



Side View



Back View

Performance Table: SCX-2X2-20W-MCT4-D-DIP

MODEL NO.	Wattage	Voltage	Lumens	Color Temp.	BUG Rating	LPW
SCX-2X4-20W-MCT4-D-DIP	20W	120~277V	2200LM	3000K/3500K/4000K/5000K	B1-U2-G1	110

Sample Ordering

Model Size Wattage Color Temp. Dimming Feature

SCX - 2X4 - 20W - MCT - D - DIP

Factory-Installed Options:

Blank = No Option For Accessories
 OPT-SCX-EM = EMERGENCY BACK UP BATTERY
 OPT-SEN-2MDR-3 = MOTION SENSOR

FACTORY INSTALLED OPTIONS:



OPT-SEN-2MDR-36
Motion Sensor



OPT-SCX-EM
Emergency Back up Battery



COLOR CHART: * Choose from one of our Premium Colors with no set-up fee.

Gloss:



SILVER METALLIC
70 GLOSS
T357-GR105



SILVER METALLIC
30 GLOSS
T353-GR06



DARK RED 90
GLOSS
P009-RD02



INTERNATIONAL
ORANGE 90
GLOSS
T009-OG26



SAFETY ORANGE
90 GLOSS
T009-OG01



YELLOW 90
GLOSS
T009-YL14



YELLOW 90
GLOSS
T009-YL01



TRAFFIC GREEN
70 GLOSS
T007-GN16



GREEN 70 GLOSS
T007-GN13



GREEN 60 GLOSS
C006-GN03



BLUE 90 GLOSS
T009-BL01



DARK BLUE 80
GLOSS
T008-BL20



RAL 8028 TERRA
BROWN 90 GLOSS
C209-BR358

Hammer:



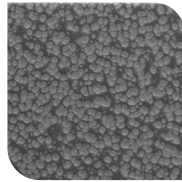
WHITE HAMMER
T013-WH09



BEIGE HAMMER
T013-BG38



GREY HAMMER
C013-GR08



SILVER
HAMMERTONE
T064-GR05



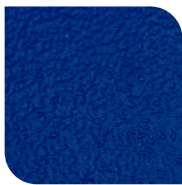
BLACK HAMMER
T013-BK62



RED HAMMER
T013-RD15



GREEN HAMMER
T013-GN220



BLUE HAMMER
T013-BL468



BRONZE HAMMER
T012-BR161

Texture:



WHITE TEXTURE
C031-WH120



FLINT GRAY
TEXTURE
T243-GR522



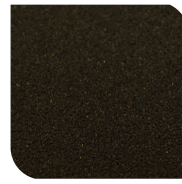
BLACK TEXTURE
C241-BK109



RED TEXTURE
T241-RD129



BLUE TEXTURE
C241-BL544

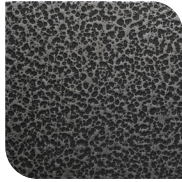


OIL RUBBED
BRONZE TEXTURE
T291-BR251

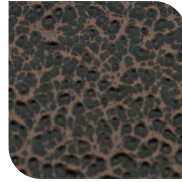
Vein:



BLACK/WHITE
VEIN
T075-WH34



SILVER VEIN
T375-BK26



COPPER VEIN
EXTERIOR
T075-BK211



GOLD VEIN
T375-BK10



COPPER VEIN
T375-BK07

